



PRODUCT BROCHURE

2023



TABLE OF CONTENTS

SOLAR + LED FLOODLIGHT	3
SOLAR WALL LIGHT	6
DC TO AC MSW INVERTERS.....	9
LITHIUM CUBE.....	13
COMMERCIAL AND INDUSTRIAL SOLAR AIR CONDITIONER.....	14
RESIDENTIAL SOLAR AIR CONDITIONER.....	18
DC FAST ELECTRIC VEHICLE CHARGERS.....	20
AC ELECTRIC VEHICLE CHARGERS.....	23
SOLAR PANELS.....	25
RACKING AND MOUNTING SOLUTIONS FOR SOLAR INDUSTRY.....	26

SOLAR + LED FLOODLIGHT

SOLAR + LED FLOODLIGHT 4800 W



Code	8592
Brightness (Lumens)	Up to 4800 lm
Solar Panel	Monocrystalline 21W
Battery	9.6V, 12.0 Ah, Li-ion
LED count	90
Color temperature	6000 K
Remote control	Yes
Night and Motion Sensor	Yes
Mounting	Wall/Pole
Waterproof	IP65
Lighting Time	3 nights
Recharge Time	8-10 hours (bright sunlight)
Material	PCB, poly-carbonate plastic, ABS plastic, glass
PIR Sensor	25-40 pies 120°
Dimensions (HWD)	28.0 × 11.3 × 3.0 (inches)
Warranty	1 year



SOLAR + LED FLOODLIGHT 2000 - 3000 W



Code	8590	8591
Brightness (Lumens)	Up to 2000 lm	Up to 3000 lm
Solar Panel	6.5 W, 17% efficiency	
Battery	37.0 Wh, 3.7, Li-ion	44.4 Wh, 3.7, Li-ion
LED count	60	
Color temperature	6000 K	
Remote control	Yes	
Night and Motion Sensor	Yes	
Mounting	Wall/Pole	
Waterproof	IP65	
Lighting Time	up to 10 nights (dim lighting mode)	
Recharge Time	10 hours (bright sunlight)	
Material	Poly-carbonate	
PIR Sensor	16-269 ft (5-8 m) 120°	
Dimensions (HWD)	15.0 × 9.7 × 5.5 (inches)	
Warranty	1 year	



SOLAR + LED FLOODLIGHT 800-1600 W



Code	8588	8586
Brightness (Lumens)	Up to 800 lm	Up to 1600 lm
Solar Panel	7 W	9.5 W
Battery	6.0 Ah, 3.7 V Li-ion	5.4 Ah, 7.4, Li-ion
LED count	40	
Color temperature	6000 K	
Remote control	Yes	
Night and Motion Sensor	Yes	
Mounting	Wall/Pole	
Waterproof	IP65	
Lighting Time	3 nights	
Recharge Time	~6 hours (bright sunlight)	
Material	PCB, poly-carbonate plastic, ABS plastic, glass	
PIR Sensor	9-26 ft (3-8 m) a 120°	
Dimensions (HWD)	17.0 x 7.5 x 2.0 (inches)	20.0 x 9.0 x 2.5 (inches)
Warranty	1 year	

SOLAR WALL LIGHT

IN & OUT DETACHABLE SOLAR WALL LIGHT



Código	8567
Brightness (Lumens)	Up to 1000 lm
Solar Panel	4.5W, DC5.5V, mono with tempered glass
Battery	3.7 V, 4000 mAh, 14.8 Wh Li-ion (replaceable)
LED count	64
Color temperature	4000 K
Remote control	Yes
Night and Motion Sensor	Yes
Mounting	Wall/Fence
Waterproof	IP65
Lighting Time	3-5 nights
Recharge Time	5-6 hours full sunlight
Material	ABS+PC, V0 fireproof, anti-UV
PIR Sensor	120 °
Dimensions (HWD)	10.6 x 8.4 x 3.0 (inches)
Warranty	1 year

LUZ DE PARED SOLAR DE 2000 LÚMENES



Código	8569
Brightness (Lumens)	Up to 2000 lm
Solar Panel	1.0 W
Battery	3.7 V, 14.8 Wh
LED count	39
Color temperature	4000 K
Remote control	Yes
Night and Motion Sensor	Yes
Mounting	Wall/Flat Surface
Waterproof	IP65
Lighting Time	10 nights
Recharge Time	20 hours full sunlight
Material	Thermal Conductive Plastics
PIR Sensor	120 °
Dimensions (HWD)	4.0 x 5.0 x 5.5 (inches)
Warranty	1 year

LUZ LED DE PARED SOLAR DE 1000 LÚMENES



Código	8570
Brightness (Lumens)	Up to 1000 lm
Solar Panel	0.5 W
Battery	20 Ah, 3.6 V Li-ion
LED count	20
Color temperature	4000 K
Remote control	Yes
Night and Motion Sensor	Yes
Mounting	Wall/Flat Surface
Waterproof	IP65
Lighting Time	7 nights
Recharge Time	11 hours (full sunlight)
Material	PCB, ABS plastic, solar panel, lithium battery, steel
PIR Sensor	120 °
Dimensions (HWD)	8.9 x 8.1 x 5.6 (inches)
Warranty	1 year



DC TO AC MSW INVERTERS

Turn your solar energy & other DC power into green household energy

SLIMLINE 500 AND 800 WATTS



SLIMLINE 500



SLIMLINE 800

Code	3716	3718
TrueRated™ Power (24-hour continuous)	500 W	800 W
Peak Surge	1,000 W	1,600 W
Input	11V - 15V DC	
Output	110-120V AC	
Output Waveform	Modified Sine Wave	
Frequency	60Hz ±1Hz	
Max Power Efficiency	0.88	
No Load Current Draw	<0.2A	<0.3A
Low Voltage Alarm Level	10.5V ±0.5V	
Low Voltage Shutdown Level	9.5V ±0.5V	
Overheat Protection	Yes	
Overload Protection	Yes	
Input Short Circuit Protection	Yes	
AC Outlets	2x NEMA 5-15 USA	
USB Ports	2.1A, 5V	
Dimensions of Unit	8.0 × 4.0 × 2.4 (in.)	10.3 × 4.3 × 2.5 (in.)
Weight of Unit	2.0 lbs.	2.3 lbs.



SLIMLINE 1000, 1500 AND 2000 WATTS



SLIMLINE 1000



SLIMLINE 1500



SLIMLINE 2000

Code	3720	3722	3724
Continuous Power	1,000 W	1,500 W	2,000 W
Surge Power	2,000 W	3,500 W	4,000 W
Input (24V/48V also available)	11V - 15V		
Output	115V		
Output Waveform	Modified Sine Wave		
Frequency	60Hz ±1Hz		
Max Power Efficiency	90%		
No Load Current Draw	<0.8A	<1.0A	<1.0A
Low Voltage Alarm Level	10.5V ±0.5V		
Low Voltage Shutdown Level	9.5V ±0.5V		
Overheat Protection	Yes		
Overload Protection	Yes		
Input Short Circuit Protection	Yes		
AC Outlets	3 Standard U.S. Grounded		
USB Ports	2x 3.0A Shared		No
Dimensions of Unit	9.3 × 5.2 × 2.4 (in.)	12.3 × 5.2 × 2.4 (in.)	14.4 × 5.2 × 2.4 (in.)
Weight of Unit	3.0 lbs.	4.1 lbs.	4.6 lbs.
Wired Remote Control Outlet	No		Yes (remote not included)



PROLINE 3000, 5000, 8000, 10000 WATTS



Código	3742	3744	3746	3748
Continuous Power	3,000 W	5,000 W	8,000 W	10,000 W
Surge Power	6,000 W	10,000 W	16,000 W	20,000 W
Input (24V/48V also available)	11V - 15V			
Output	115V - 125 V			
Output Waveform	Modified Sine Wave			
Frequency	60Hz ± 1Hz			
Max Power Efficiency	90%			
No Load Current Draw	<1.0A	<1.5A		<2.5A
Low Voltage Alarm Level	10.5V ±0.5V			
Low Voltage Shutdown Level	9.5V ±0.5V			
Overheat Protection	Yes			
Overload Protection	Yes			
Input Short Circuit Protection	Yes			
AC Outlets	3 Standard U.S. Grounded		4 Standard U.S. Grounded	
Dimensions of Unit	13.5 x 6.5 x 6.0 (in.)	15.3 x 6.5 x 6.0 (in.)	19.5 x 7.8 x 6.3 (in.)	21.5 x 7.8 x 6.3 (in.)
Weight of Unit	8.8 lbs.	11.1 lbs.	18.8 lbs.	21.5 lbs.
Wired Remote Control Outlet	Included			



PURE LINE 700, 1000, 2000, 3000 WATTS



Code	3802	3804	3808	3810
Continuous Power	700 W	1,000 W	2,000 W	3,000 W
Surge Power	1,400 W	2,000 W	4,000 W	6,000 W
Input	11V - 15V			
Output	110V - 120 V			
Total Harmonic Distortion	<3%			
Frequency	60Hz ±1Hz			
Max Power Efficiency	90%			
Overheat & Overload Protection	Yes			
High Output Terminals	No	Yes		
AC Outlets	2x NEMA 5-15 USA		3x NEMA 5-15 USA	
USB Outlet	2.1A			
Dimensions of unit	12.5 × 7.0 × 3.0 (in)	13.0 × 7.0 × 3.0 (in)	17.5 × 8.7 × 3.7 (in)	19.0 × 8.7 × 3.7 (in)
Weight of unit	5.6 lbs.	6.0 lbs.	11.7 lbs.	12.5 lbs.

LITHIUM CUBE

Power your household appliances and recharge your devices away from home and during emergency situations. The Lithium Cube gives you the freedom to be where you want to be, powering the gear you want to bring.

It can be recharged on the fly, using your car's DC socket or by solar panel.



Code	8834	8836
Battery	Lithium 18650 14.8V, 515Wh	Lithium 21700 21.6V, 1166Wh
AC Output	120V @ 60Hz	
Continuous AC Power	500W	1,000W
Waveform	PSW	
DC Output (port)	12V / 5A	
DC Output (socket)	12V / 10A	
USB Output	(3) 2.4A (1) QC 3.0 (5V3A / 9V2A/12V1.5A)	(2) 2.4A (2) QC 3.0 (5V3A / 9V2/12V1.5A)
USB-C Input (Charging)	60W PD	100W PD
USB-C Output	60W PD	27W PD 100W PD
Max Solar Input	80W	100W (12V) or 200W (24V)
LED Flashlight	60lm	
Dimensions (HWD)	6.8 × 10.3 × 6.8 in	8.3 × 13.4 × 9.3 in
Weight	11.7 lbs.	24.5 lbs.
Warranty	1 Year	



COMMERCIAL AND INDUSTRIAL SOLAR AIR CONDITIONER



Model		WFC-	SC5	SC/SH10	SC/SH20	SC/SH30	SC50	M100	MB100
Cooling		MBTUh	60.0	120.0	240.0	360.0	600.0	1200.0	1200.0
Heating (WFC-SH only) COP=0.97		MBTUh	---	166.3	332.6	498.9	---	---	---
Cooling Design Condition COP		COP	0.70						0.75
Chilled / Hot	Cooling	°F	54.5 Inlet / 44.6 Outlet (54.0 Inlet / 44.0 Outlet for M/MB100)						
	Heating	°F	---					---	



Model		WFC-	SC5	SC/SH10	SC/SH20	SC/SH30	SC50	M100	MB100
				117.3 Inlet / 131.0 Outlet (WFC-SH Models Only)					
	Rated Water Flow	GPM	12.1	24.2	48.4	72.6	121.1	242.5	239.4
	Evaporator Pressure Loss	PSI	7.6	8.1	9.6	10.1	6.4	10.5	16.4
	Maximum Operating Pressure ⁵	PSI	150 ⁴						
	Allowable Water Flow	% Rated	80% - 120%						
	Water Retention Volume	Gal	2.1	4.5	12.4	19.3	33.6	32.0	44.9
Cooling Water	Total Heat Rejection	MBTUh	145.7	291.4	582.8	874.2	1457.0	2917.0	2800.0
	Temperature	°F	87.8 Inlet / 95.0 Outlet (85.0 Inlet / 95.7 Outlet for M/MB100)						
	Rated Water Flow ¹	GPM	40.4	80.8	161.7	242.5	404.5	539.5	521.5
	Allowable Water Flow	% Rated	100% - 120%						
	Absorber Pressure Loss	PSI	5.6	12.3	6.6	6.7	6.6	9.6	11.6
	Condenser Pressure Loss	PSI	5.6	Included in Absorber	6.6	6.7	3.2	Included in Absorber	
	Maximum Operating Pressure ⁵	PSI	150 ⁴						
	Water Retention Volume	Gal	9.8	17.4	33.0	51.3	87.2	111.5	169.1
Heat Medium ⁷	Heat Input	Mbtuh	85.7	171.4	342.8	514.2	857.0	1717.0	1600.0
	Design Temperature Drop	°F	9.0					18.0	36.0
	Allowable Temperature	°F	158.0 – 203.0						149 - 203
	Generator Pressure Loss	PSI	11.2	13.1	6.7	8.8	13.6	4.3	13.2
	Max Operating Pressure ⁵	PSI	150 ⁴						



Model		WFC-	SC5	SC/SH10	SC/SH20	SC/SH30	SC50	M100	MB100	
	Rated Water Flow	GPM	19.0	38.0	76.1	114.1	190.4	195.9	91.1	
	Allowable Water Flow	% Rated	30% - 120%					25-120%	50-120%	
	Water Retention Volume	Gal	2.6	5.5	14.3	22.2	39.7	66.0	101.7	
Electrical ⁸	Power Supply		115/60/1	208VAC / 60 Hz / 3-Phase						
	Consumption ²	Watts	48	210	260	310	670	660	1370	
	Minimum Circuit Amps	Amps	0.89	0.6	0.9	2.6	4.7	2.7	17.1	
	MOCP – Max. Fuse Size	Amps	15						20	
Capacity Control			On - Off					Proportional or On-Off		
Construction	Dimensions ³	Width	Inches	23.4	29.9	41.9	54.3	70.3	59.4	73.5
		Depth	Inches	29.3	38.2	51.2	60.8	77.2	144.0	147.0
		Height	Inches	69.1	74.8	79.1	80.5	82.1	88.6	97.6
	Weight	Dry	Lbs	805	1100	2050	3200	4740	10891	13867
		Operating	Lbs.	926	1329	2548	3975	5955	12655	16502
	Cabinet			NEMA 3R, Silver Metallic Pre-Painted Hot Dip Zinc-Coated Sheet Steel						
Noise Level ⁹		dB(A)	38	49		46	51	56	57	
Piping	Chilled / Hot Water	Inches	1-1/4 NPT	1-1/2 NPT	2 NPT		3 NPT	4 Flanged	4 Flanged	
	Cooling Water	Inches	1-1/2 NPT	2 NPT		2-1/2 NPT	3 NPT	5 Flanged	6 Flanged	
	Heat Medium	Inches	1-1/2 NPT		2 NPT	2-1/2 NPT	3 NPT	4 Flanged	3 Flanged	

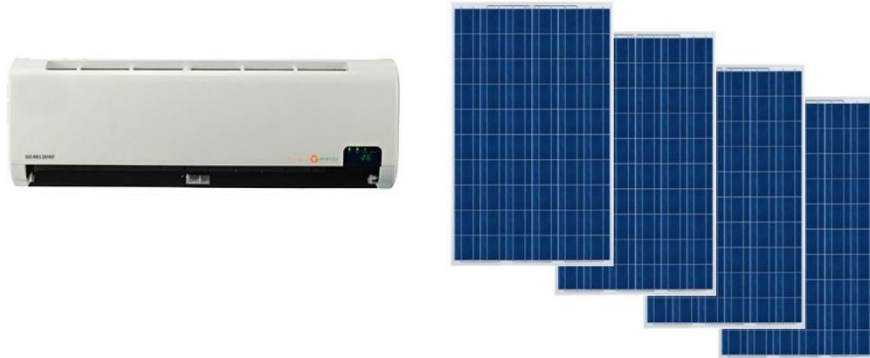


Notes:

1. Minimum cooling water flow is 100%.
2. Power Consumption does not include external pumps or fan motors.
3. Height does not include removable lifting lugs, but does include level bolts. Width/Depth does not include junction box or mounting plates.
4. Tubing design has passed UL hydrostatic testing at 450 psig.
5. Do not exceed 150 PSI (1034 kPa) in any fluid circuit.
6. Specifications are based upon water in all fluid circuits and fouling factor of 0.0005 ft²-hr-°F/Btu.
7. Density of Heat Medium is 60.47 lbs./ft³, Specific Heat 1.003 BTU/lbs°F (185°F).
8. Electric field wiring must be made in accordance with local regulation and must be sized to provide less than 2% voltage drop.
9. Noise level is measured in a free field at a point 1m away from the cabinet and 1.5m above ground level.



RESIDENTIAL SOLAR AIR CONDITIONER



Model	ACDC24C	ACDC12C	ACDC18C
Power AC	208-240V, 50/60Hz	208-240V, 50/60Hz	208-240V, 50/60Hz
*Cooling Capacity (rated/max) BTU	23,000 / 24,000	12,000 BTU/h	17,000 / 18,015
Power Input @ Max Cooling	1950W	960W	1360W
Avg. Power Consumption, Cooling	1143W	544W	819W
Cooling EER / COP at Rated Cooling	19.78/ 5.8	12.5 / 3.66	13.25/ 3.88
SEER / SEER w/ solar calculation	>21 / >65	>22 / >75	>22 / >75
*Heating Capacity	24,000 BTU	12,000 BTU/h	18,083 BTU
Power Input @ Rated Heating	2400W	1028W	1360W
Avg. Power Consumption, Heating	1390W	601W	700W
Heating COP (Full Speed)	2,92	3,42	3,89
Max power Input	2400W	11	1900W
Indoor Fan Motor	BLDC	BLDC	BLDC
Indoor Fan Input (Highest speed)	50W	23W	40W
Indoor Air Flow (CFM)	1300/1090/880	1250/1000/850	1180/1010/850
Outdoor Fan Motor	Variable BLDC	360/340/295	360/340/295
Indoor Noise Level (Hi/Med/Lo)	50/42/34 dB(a)	41/38/32 dB(a)	41/38/33 dB(a)
Indoor Unit Dimensions (W*H*D) mm	1121x329x231	34" x 8" x 12"	970x315x242
Indoor / Outdoor Unit Weight	30 Lbs. /	22 Lbs.	30 Lbs.
SEER (AC)/ ACDC Equivalent	20 / 60	100-300 Vmp	110-300 Vmp
HSPF (AC) / ACDC	9.5 / 29	<=/15a	<=/10a



Model	ACDC24C	ACDC12C	ACDC18C
Power DC, PV, series connection	110-300 Vmp	20F-125F / 5F-86F	50F-125F / 6F-86F
Solar Power Input	<=15a	53 dB(a)	56 dB(a)
Outdoor Range (cooling/heating)	50F-125F / 5F-86F	Welling BLDC	Variable BLDC
LRA / RLA	29 / 5.2	1150	1250
Swing (manual)	Up & down	71 Lbs.	124 Lbs.
Dehumidification	2.15 L/h	34" x 13" x 22"	955x700x390 mm
Outdoor Unit, weight	106 Lbs.	Toshiba/GMCC Rotary	Toshiba/GMCC 2xRotary
Outdoor Unit Dimension (W*H*D)	900x700x350 mm	R410A / 44.1oz. / 1150g	R410A 1600/56.5
Refrigerant g/oz	1.62 kg. / 58 Oz.	50 ft. / 16 ft.	50 ft. / 16 ft.
Max. Lineset / Max. Elevation (Ft.)	50 ft. / 16 ft.	1.3 L/h	1.9 L/h
Moisture Removal	2.4 L/h	5.9A	7.13A
Refrigerant g/oz	1.62 kg. / 58 Oz.	0,58	1.2a
Refrigerant Oil	VG74 / 770 ml	VG74 / 370 ml	VG74 / 480 ml
Design Pressure	601/167 PSIG	550/340 PSIG	550/340 PSIG
Liquid side/ Gas side (Flare)	φ6.35*0.5+φ15.88×0.75	1/4"/ 3/8"Flare	φ6.35*0.5+φ15.88×0.75
Certifications	ETL / UL, Energy Star	ETL / UL, Energy Star	ETL / UL, Energy Star
Minimum number of panels required Off-Grid	6	3	4
Panel capacity	450-500 W	290-375 W	290-375 W

* Off-grid BTU capacity will be reduced when solar power is limited. An AC backup connection is recommended for full & uninterrupted operation

DC FAST ELECTRIC VEHICLE CHARGERS

DC EVBOLT CHARGER



Model		EVB-DC-PS60	EVB-DC-PS120	EVB-DC-PS180
Power Specification				
AC Input	Input Rating	Three Phase 480Vac (+10%, -15%)		
	AC Input Connection	3P+N+PE (Wye configuration), TN/TT		
	Max. Input Current	DC System Three Phase 100 A	DC System Three Phase 170A	DC System Three Phase 260A
	Frequency	50Hz/60Hz		
	Power Factor	>0.99		
	Efficiency	>94%, at optimize V/I point		
DC Output	Output Voltage Range	CCSI:150 950VdcCHAdeMO:150 500Vdc		



	Max. Output Current	CHAdeMO/CCSI:120A@500V dc	CHAdeMO:120A@500 V CCSI:200A@600V, optional 300A	CHAdeMO:120A@500V CCSI:200A@900V, optional 300A
	Max. Output Power	DC System: 60kW	DC System: 120kW	DC System: 180kW
	Voltage Accuracy	2%		
	Current Accuracy	2%		
User Interface & Control				
	Display	7" LCD	7" TFT-LCD	7" TFT -LCD
Communication				
	External	Ethernet, Wi-Fi, y 4G	Ethernet, Wi-Fi, y 4G	Ethernet, Wi Fi, y 4G
	Internal	CAN bus/RS485	CAN bus/RS485	CAN bus/RS 485
Mechanical				
	Cabinet Dimensions (WDH)	700 x 331 x 1800 mm+1%	800 x 650 x 1900 mm +1%	
	Weight	235kg+1%	420kg +1%	500kg +1%
	Cable Length	4m		
	Cable Management	Optional Cable Management (Not Included)		

DC EVER CHARGER



Code		CABINET	
Power Cabinet Product Details	Power Input	Input Rating	408-530Vac
	Power Output	DC Output Voltage	150-1000Vdc
		Output Rating	240kW
		Max Output Current	800A@300V, 600A@400V
	Environmental	Operating Temperature	-30°C-55°C (>50°C derating)
	Mechanical	Ingress Protection	NEMA 3R
		Dimensions	80.70 in x 41.33 in x 29.52 in
		Net Weight	882 LBS
Regulation	Certificate	UL, cUL, OpenADR, Energy Star	
Connectivity	Wireless	EverCharge mesh and optional cellular	
Dispenser Product Details	Power Output	DC Output Voltage	150-1000Vdc
		Max Output Current	200A Per Port
		Connector Type	CCS Type 1 or NACS
	Environmental	Operating Temperature	-30°C-55°C (>50°C derating)
	Mechanical	Cable Length	16 FT
		Ingress Protection	NEMA 3R
		Dimensions	78.7in x 37in x 17.71in
		Net Weight	575 LBS



AC ELECTRIC VEHICLE CHARGERS

For fleets, condos, apartments, and workplaces

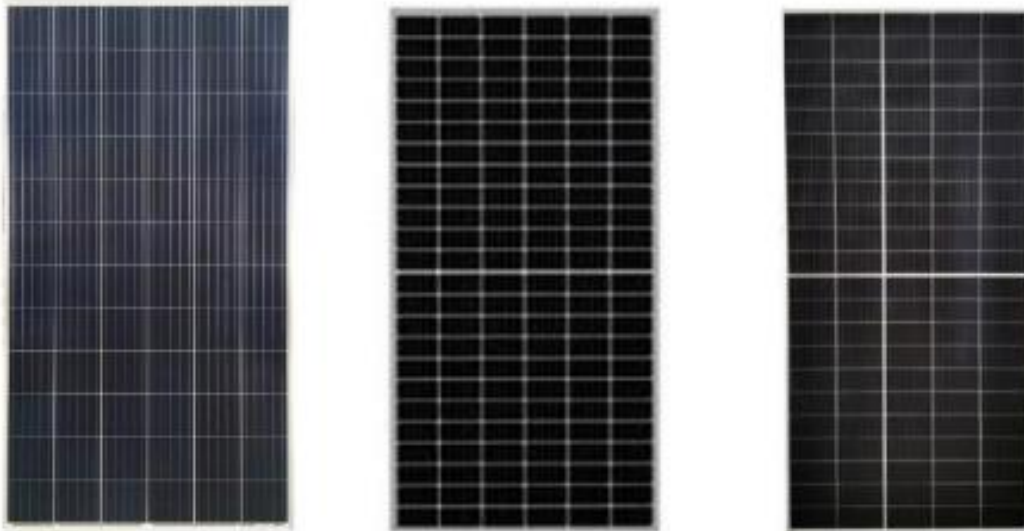


Code		EV002-48 E800-1000	EV002-80 E800-1001
Power Input	Input Rating	208V or 240V AC single-phase	
	Connections and wiring	L1, L2, and ground, hardwired	
	Standby Power	1.61 watts	
	Metering	CTEP certified revenue-grade meter with 1% accuracy	
Power Output	Output Rating	Maximum output: 48A	Maximum output: 80A
Protection	Internal Residual Current Detection	20 mA CCID per UL 2231	
	Integrated Over Current Safety Disconnect	60A overcurrent protection 10KA interrupting rating	100A overcurrent protection 10KA interrupting rating
	Plug-Out Protection	Power output is terminated upon detection of plug-out	
	Electrical Protection	Over-current, short circuit, over-voltage, under-voltage, ground fault, surge protection, over temperature	
User Interface and Control	Status Indicators	LED lights and audible tones	
	RFID User Authentication	ISO 14443 Type A (Mifare), ISO 14443 Type B, ISO 18092	
Environmental	Operating Temperature	-22°F to 122°F (-30°C to 50°C)	



Code		EV002-48 E800-1000	EV002-80 E800-1001
	Operating Humidity	Up to 95% relative humidity non-condensing	
Mechanical	Charging Cable Length	18' (5.5M)	18' (5.5M) or 24' (7.3M)
	Ingress Protection	Type 3R	
	Mounting Type	Wall-mount, pole-mount, ceiling-mount, and pedestal	
	Dimensions	Height: 13" Width: 8" Depth: 4"	
	Net Weight	26 Lbs. (12 kg)	
Regulation	Certificate	Energy Star, OpenADR, UL, Cul	
	Charging Interface	SAE J1772 or Tesla Connector	
Connectivity	Wireless	EverCharge mesh and optional cellular	

SOLAR PANELS



Tailored Solutions

For a commercial solar system, we offer designs that provide maximum efficiency and high quality through solar panels and inverters, with immediate assistance from factory technicians.

*Solar panels are not sold separately.



RACKING AND MOUNTING SOLUTIONS FOR SOLAR INDUSTRY



Roof anchors

Simple anchors "EZ Roof Mounts" for roofs.



Sloped roof systems.

Mounting structures and components. The Sloped roof systems can be configured in countless ways.



Flat Roof System

The adjustable "EZ SunBeam" system is installed over obstacles to maximize roof space and increase the return on investment



Ground Mounting System

The EZ SunBeam system can be used with steel brackets to install ground solutions. It works with a variety of foundation systems, including ground impact anchors.



Automatic grounding systems.

Includes T-bolts and grounding rods. Shared rail adapter allows a single rail to be used with panels oriented vertically or horizontally.



PARTNER BRANDS

